



TED (15) – 3024

(REVISION – 2015)

Reg. No.

Signature

THIRD SEMESTER DIPLOMA EXAMINATION IN ENGINEERING/
TECHNOLOGY — APRIL, 2017

MACHINE DRAWING

(Common for ME and AU)

[Time : 3 hours

(Maximum marks : 100)

[Note :—1. All dimensions are in mm.

2. First angle projections is to be followed.
3. Missing data if any may be suitably assumed.
4. Both sides of the drawing sheet may be used.
5. Sketches accompanied.]

UNIT — I

- | | Marks |
|--|-------|
| I Draw Eye end type and Lewis type foundation bolt. | 15 |
| OR | |
| II Draw sectional front view and top view of a single riveted single cover butt joint (chain type) take $t = 10\text{mm}$. Show at least three rivets in top view and insert all dimensions in terms of the diameter of the rivet. Use snap head rivet. | 15 |

UNIT — II

- | | |
|---|----|
| III An isometric view of a sleeve and cotter joint is shown in figure I. Draw the following views
(a) Top half sectional elevation
(b) Bottom half sectional plan | 30 |
| OR | |
| IV An isometric view of a protected type flange coupling shown in figure II. Draw the top half sectional elevation and end view from left side. | 30 |

UNIT — III

- | | |
|---|----|
| V Detailed view of a plummer block shown in figure III. Assemble the parts and draw right half sectional front view and prepare bill of material. | 40 |
| OR | |
| VI Detailed view of a stuffing box shown in figure IV. Assemble the parts and draw left half sectional front view and prepare bill of material. | 40 |

[P.T.O.]



UNIT — IV

VII Draw the following welded joints.

- (a) Butt joint
- (b) Lap joint
- (c) Tee joint
- (d) Corner joint
- (e) Edge joint

15

OR

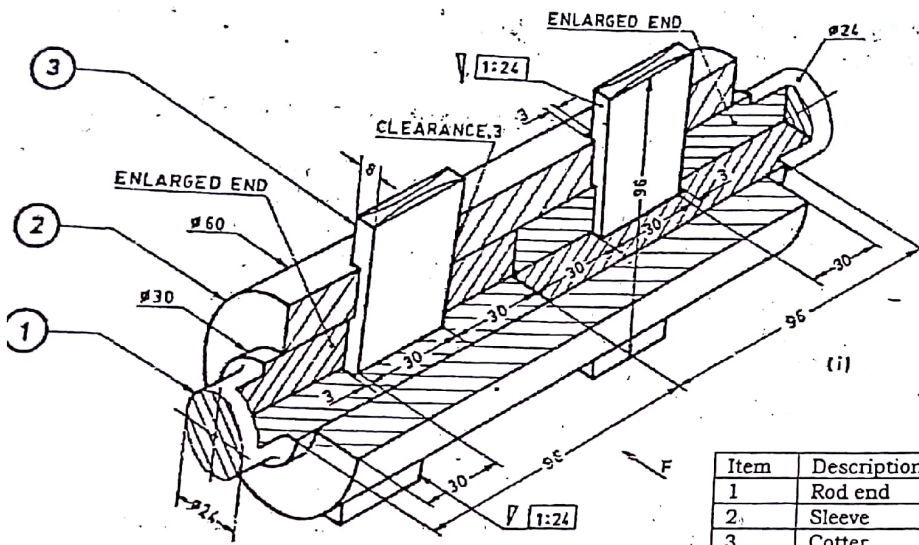
VIII Draw the single line orthographic symbol of the following pipe fittings (flanged).

- (a) 45° elbow
- (b) Tee
- (c) Reducer
- (d) Dead end
- (e) Expansion joint.

15

TED (15) – 3024

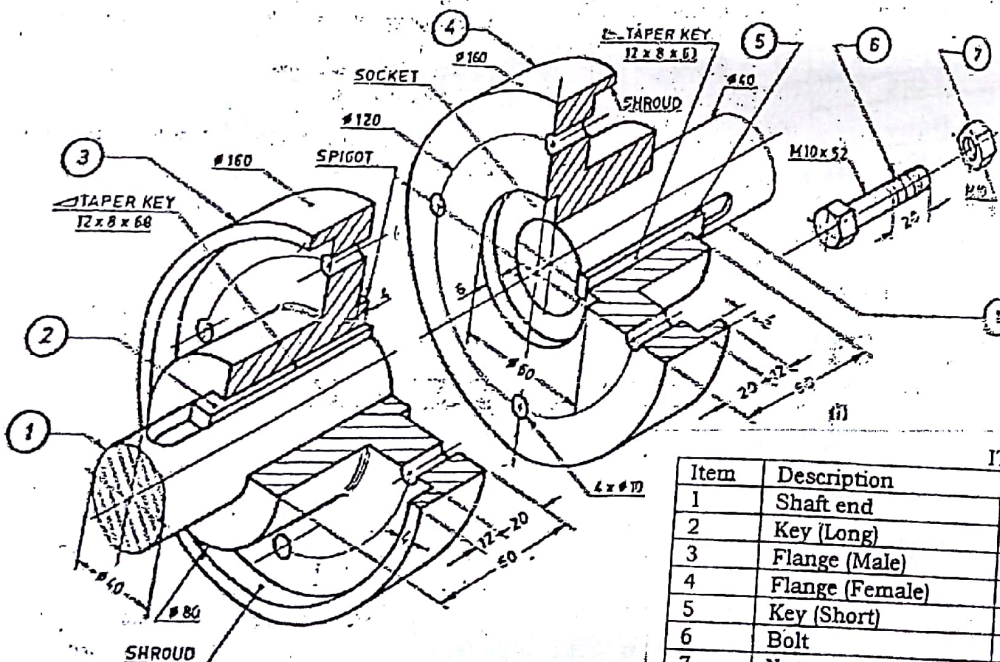
(REVISION — 2015)



ITEM LIST

Item	Description	Qty.	Material
1	Rod end	2	M.S
2	Sleeve	1	M.S
3	Cotter	2	M.S

Fig.I Sleeve and Socket Joint



ITEM LIST

Item	Description	Qty.	Material
1	Shaft end	2	Steel
2	Key (Long)	1	M.S
3	Flange (Male)	1	C.I
4	Flange (Female)	1	C.I
5	Key (Short)	1	M.S
6	Bolt	4	M.S
7	Nut	4	M.S

FigII.Coupling(Protected type)

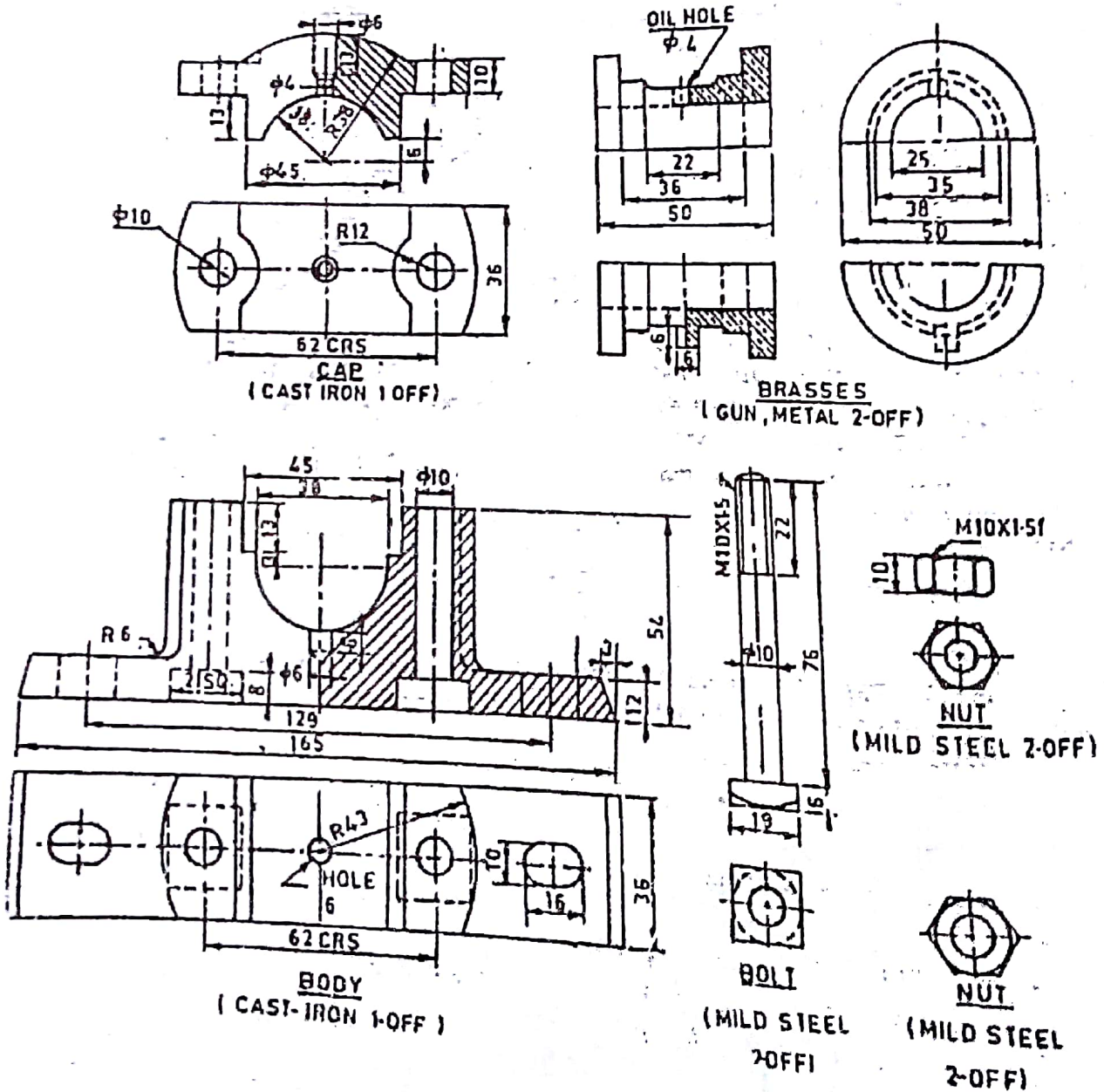


FIG. DETAILS OF PLUMER BLOCK

Fig.III Details of PLUMER BLOCK

