

DIPLOMA EXAMINATION IN ENGINEERING/TECHNOLOGY/MANAGEMENT/
COMMERCIAL PRACTICE – NOVEMBER -2020.

MACHINE DRAWING

(Maximum Marks: 75)

[Time: 2.15 hours]

[Note:- 1. Missing data if any may be suitably assumed.

2. Sketches are accompanied.

3. All dimensions are in mm.

4. First angle projection is to be followed]

PART–A

(Answer **any One** out of two questions. Each question carries 20 marks)

Marks

UNIT I

- I. Draw three views of Hexagonal nut for a bolt. Use standard proportion of the bolt diameter. (20)

OR

- II. Draw the plan and sectional elevation of a single riveted, single strap butt joint. Taking thickness of the plate as 10mm. Use standard proportional dimensions. (20)

PART - B

(Answer **any One** out of four questions. Each question carries 40 marks)

UNIT II

- III. An isometric view of Gib and Cotter joint is shown in fig 1. Draw the top half sectional elevation and its end view. Show the all dimension in elevation. (40)

OR

- IV. An isometric view of a flanged coupling (bush type) is shown in fig.2. Draw the half sectional elevation of the coupling and its end view. Show the all dimension in elevation. (40)

UNIT III

- V. An isometric view of a Foot step bearing is shown in fig 3. Draw the right half sectional elevation in the direction of 'F' and top view. Also show the bill of material. (40)

OR

- VI A dissembled view of Stuffing box is shown in fig.4. Draw its left half sectional elevation and show the bill of materials. Also show the dimensions. (40)

PART - C

(Answer **One** out of two questions. Each question carries 15 marks)

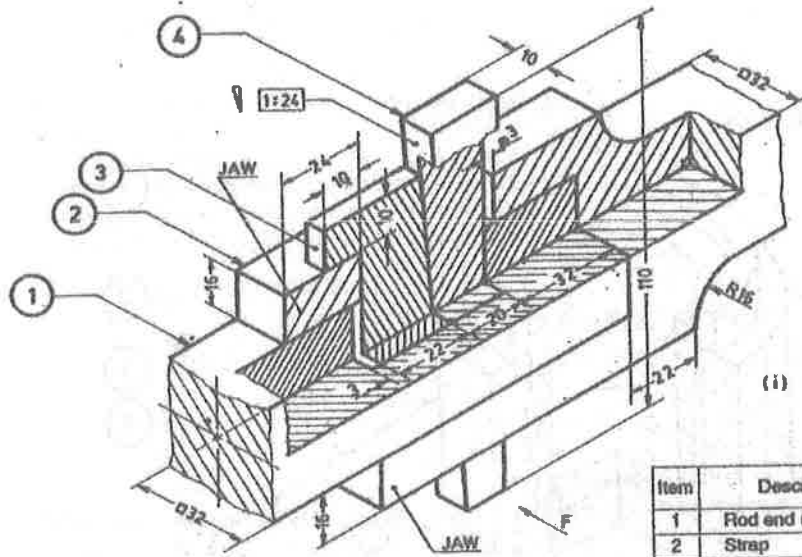
UNIT- IV

- VII Draw the following weld symbols.

- (a) Fillet Weld (b) Square butt weld (c) Single V-butt weld
(d) Single J-Butt weld (e) Single bevel butt weld (f) Single U-butt weld. (15)

OR

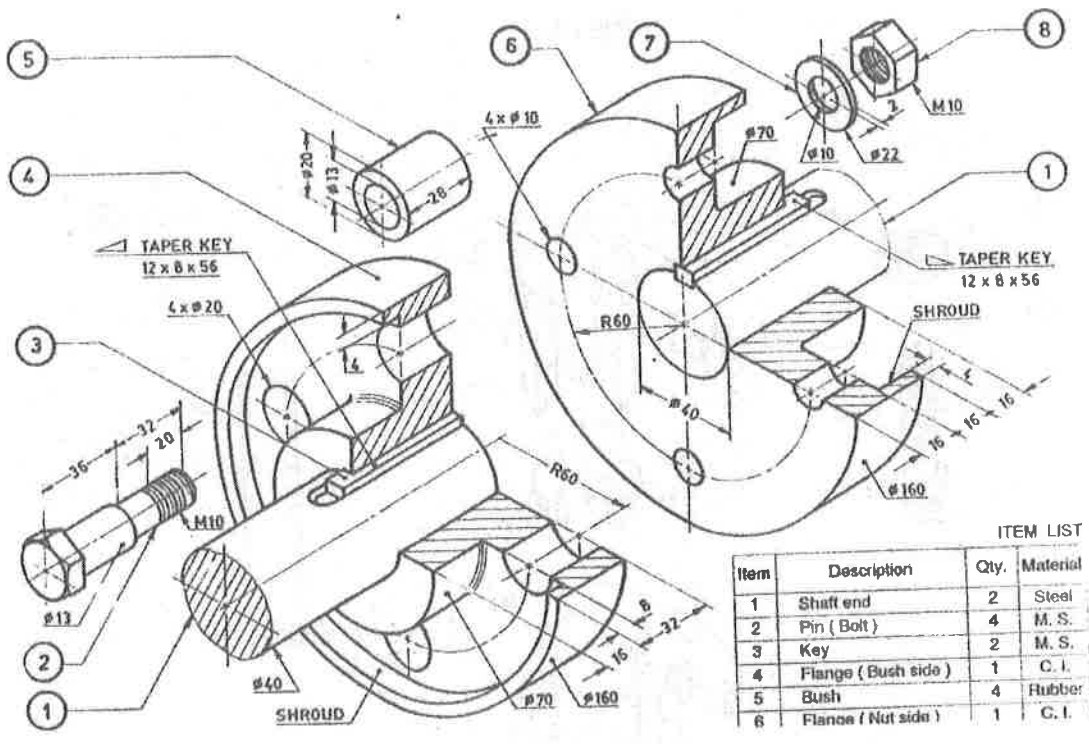
- VIII Draw the plan and elevation of single line orthographic layout for the delivery side of water pump installation. (15)



ITEM LIST

Item	Description	Qty.	Material
1	Rod end (Square)	1	M. S.
2	Strap	1	M. S.
3	Gib	1	M. S.
4	Cotter	1	M. S.

(Fig. 1)



ITEM LIST

Item	Description	Qty.	Material
1	Shaft end	2	Steel
2	Pin (Bolt)	4	M. S.
3	Key	2	M. S.
4	Flange (Bush side)	1	C. I.
5	Bush	4	Rubber
6	Flange (Nut side)	1	C. I.

(Fig. 2)

