

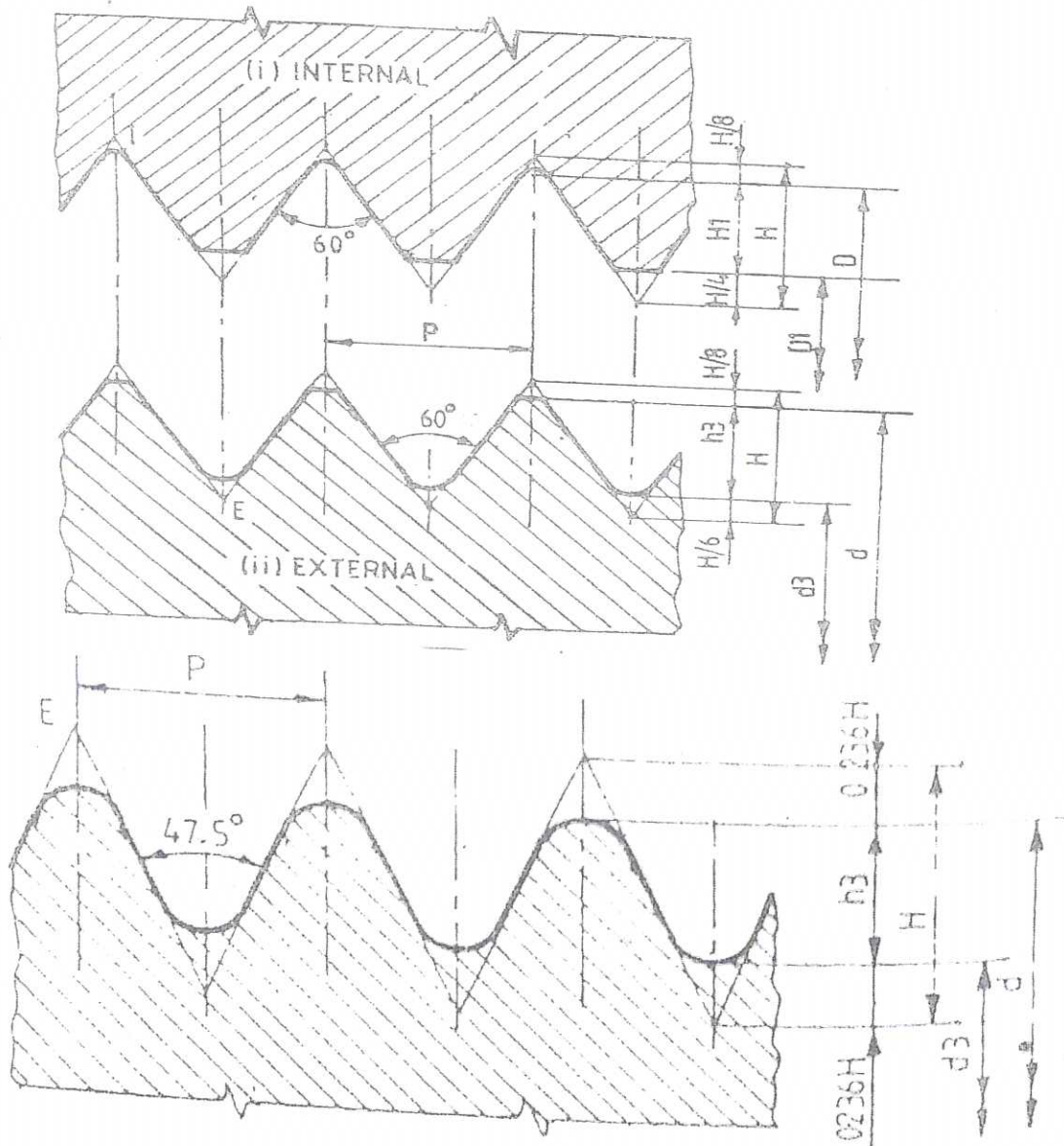
SCHEME OF VALUATION

Revision: 2015

Course code:3024

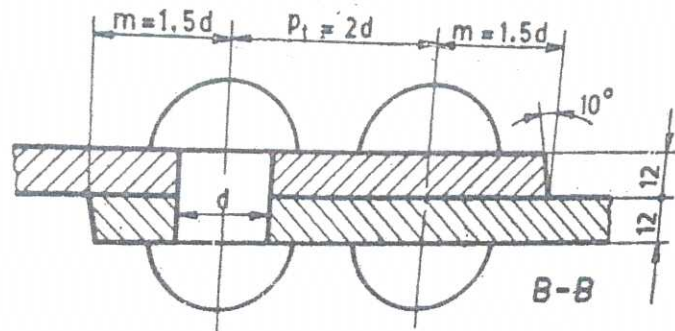
Course title: Machine drawing

I.



$H = 1.136P, \quad h_3 = 0.6P, \quad P = 25 \text{ (GIVEN)}$

II

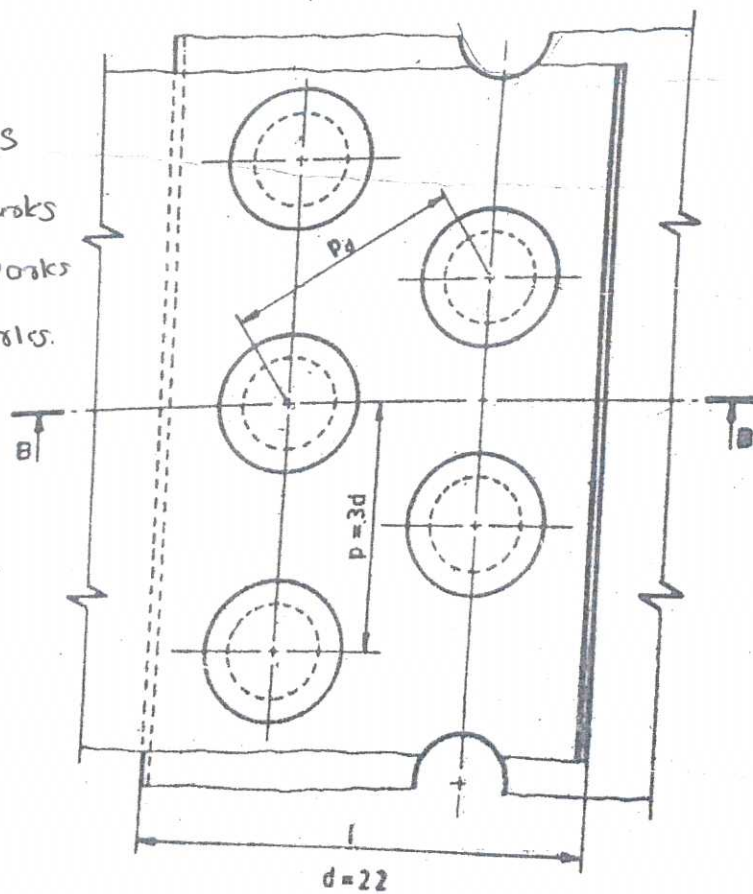


Plan = 8 marks

Elevation = 5 marks

Dimension = 2 marks

Total = 15 marks.



Calculations

$$d = 6\sqrt{t}$$

$$= 6\sqrt{12}$$

$$= 20.7 \text{ mm}$$

Next higher standard

diameter of the rivet = 22 mm

Longitudinal pitch $P = 3d$

$$= 3 \times 22 = 66 \text{ mm}$$

marginal distance

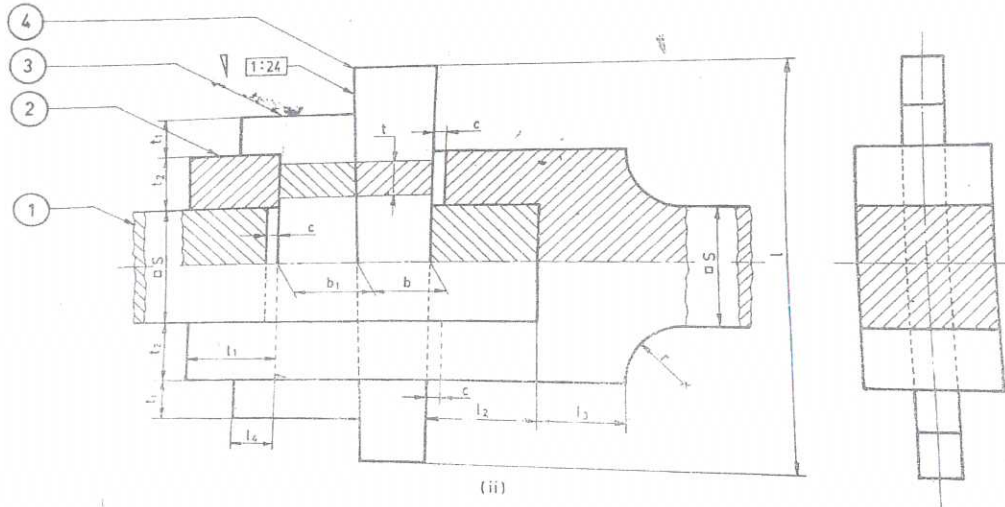
$$m = 1.5d$$

$$= 1.5 \times 22$$

$$= 33 \text{ mm}$$

Elevation = 15 marks
 Side view = 10 marks.
 Dimension, Neatness = 5 marks
 Total = 30 marks.

III



IV

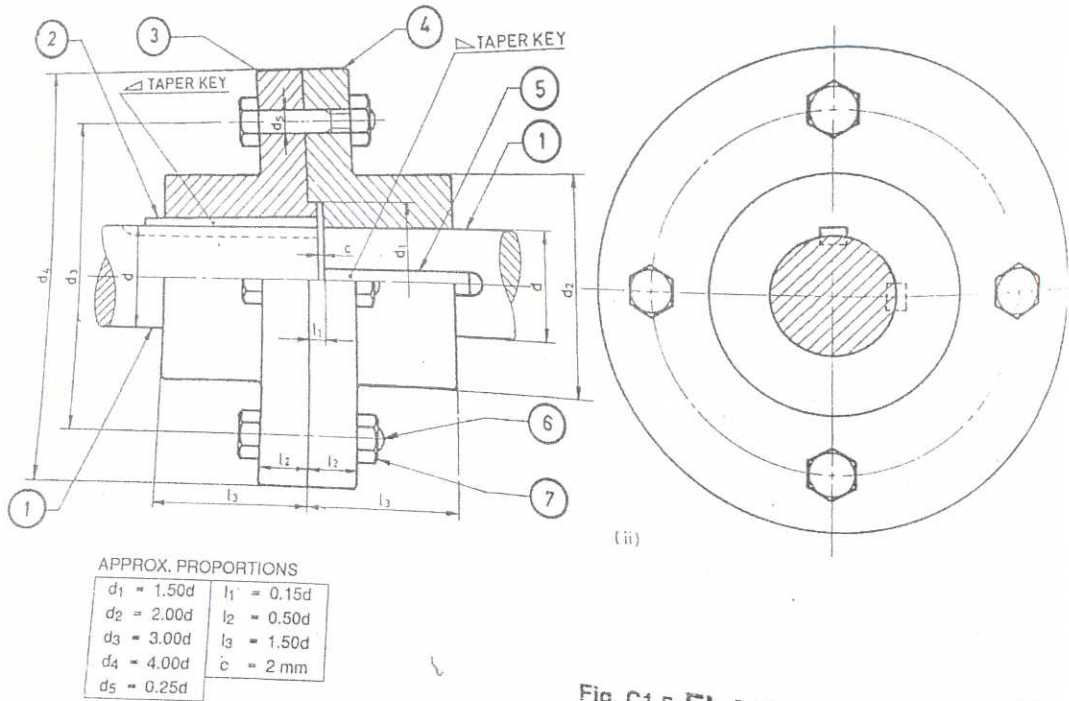


Fig. C1.5 FLANGED COUPLING
 (UNPROTECTED TYPE)

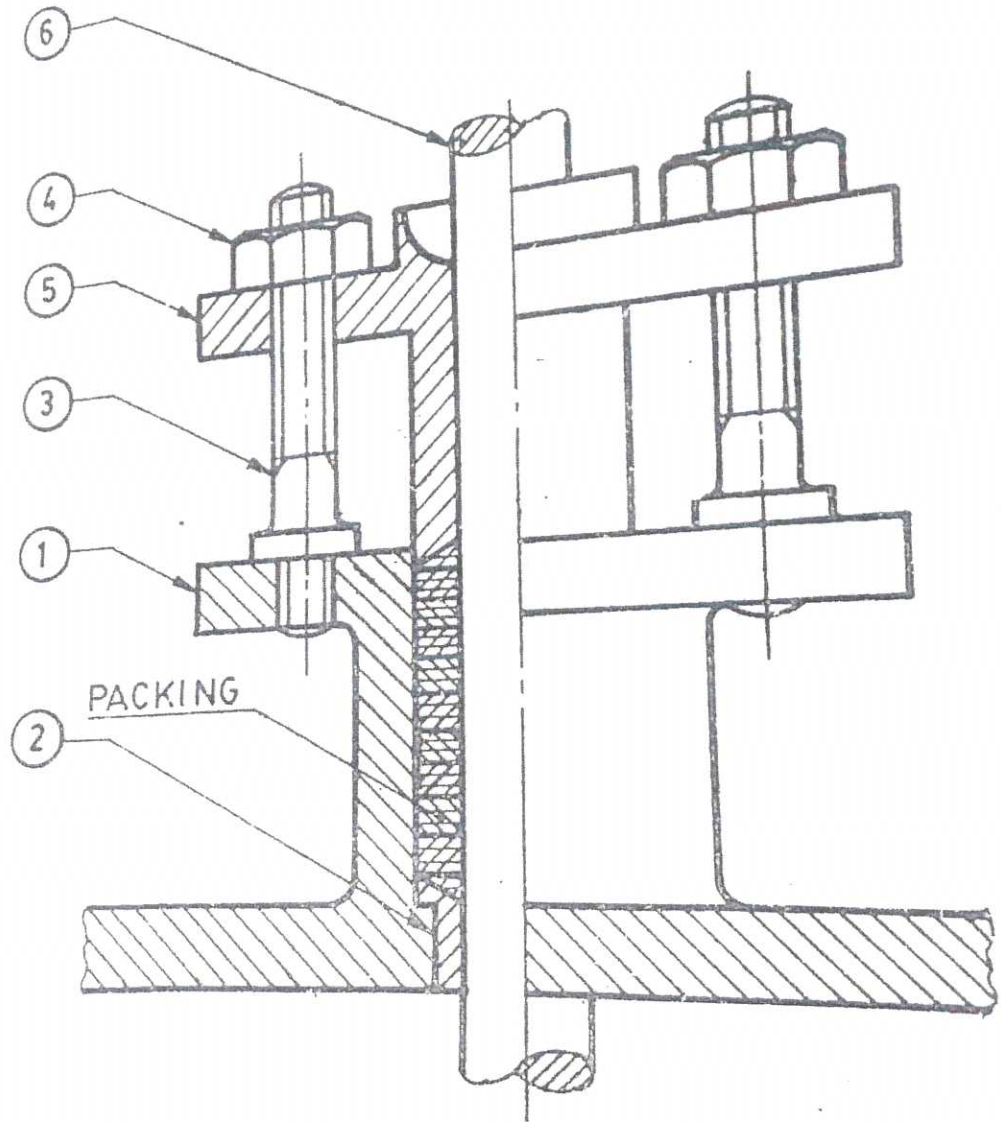
Elevation = 15 marks

Side view = 10 marks

Dimension, Neatness = 5 marks

Total = 30 marks.

V



ITEM LIST

Item	Description	Qty.	Material
1	Body	1	C. I.
2	Gland bush	1	Brass
3	Stud	2	M. S.
4	Nut	2	M. S.
5	Gland	1	C. I.
6	Piston rod	1	Steel

Front view = 25 marks

Bill of material = 5 marks.

Dimension, Neatness = 10 marks

Total = 40 marks.

VII

GATE VALVE	
GLOBE VALVE	
CHECK VALVE	
ANGLE VALVE	
CROSS OR 3 WAY VALVE	

(5x3 = 15 marks)

VIII

- Butt weld — ||
- V butt joint — V
- J butt joint — J
- Fillet weld — Δ
- Single-U-butt — Y

(5x3 = 15 marks)